

PREMIUM 4315



Cap made of premium technical material - 65% cotton, 32% nylon and 3% spandex.

The fabric features laser-perforated mesh for maximum airflow and an antimicrobial sweatband for long-lasting freshness. The cap has a low profile, is 6 panels and has a luxurious silicone hook-and-loop closure. It is excellent for performance and modern style - sports, commuting, everyday wear.

TECHNICAL SPECIFICATION

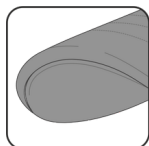
Style:	6 panels cap	Front:	Structured
Color:	Sky	Peak:	Standard
Number of panels:	6	Eyelets:	Yes
Closure:	Velcro with plastic ring	Specification:	--
Material:	65% cotton + 32% nylon + 3% spandex	Size:	Universal
Others:	-	Colors:	10
Packing:	200 pieces	Size:	58cm One size fits all
Made in:	China	Weight:	0,10 Kg

CUSTOMIZATION

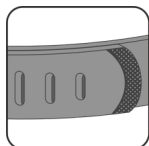
	Front	Back	Closure	Sides
• Print	130x50	60x40	-	70x30
• Embroidery	145x55	100x30	-	70x30
• Heat transfer	120x60	40x40	-	70x30



STANDARD 6 PANELS BASEBALL CAP



STANDART PEAK



VELCRO WITH PLASTIC RING

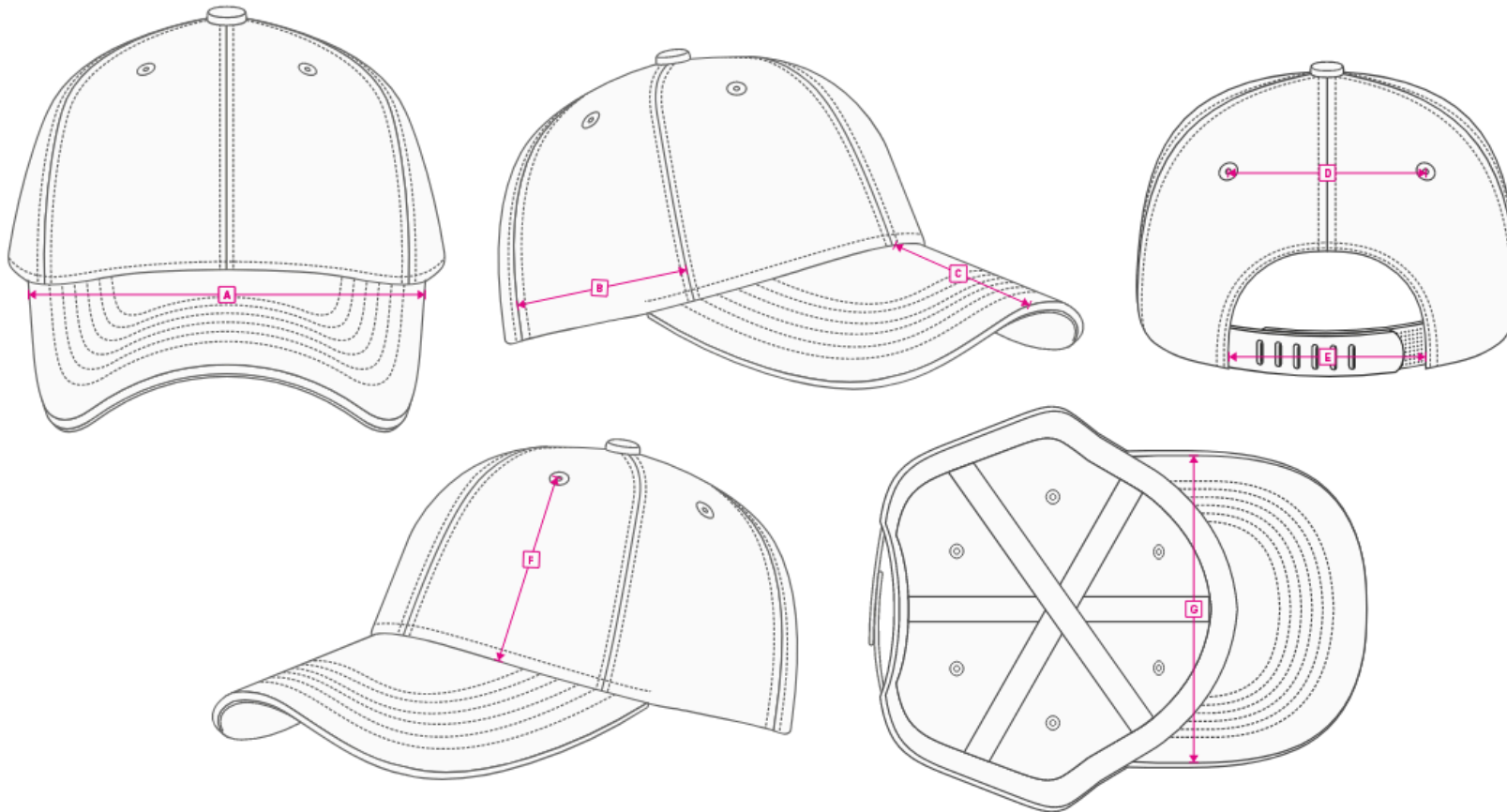


PREMIUM TECHNICAL MATERIAL



Hand wash/ do not bleach/ do not dry by tumble dryers/ dry flat/ do not iron/ do not dry clean/,do not professional wet clean





TECHNICAL SIZE

A FRONT WIDTH	180mm
B SIDE PANEL WIDTH	95mm
C DEPTH OF PEAK	70mm
D EYELETS WIDTH	70mm
E CLOSURE SIZE	80mm
F EYELET DISTANCE	90mm
G PEAK WIDTH	145mm

BASEBALL CAP COLORWAYS



4315.29



4315.11



4315.17



4315.25



4315.3



4315.33



4315.6



4315.7



4315.70



4315.8